

# Institute for Behavioral Healthcare Improvement

Dennis Morrison, PhD  
Center for Behavioral Health  
Bloomington, IN  
[dennym@kiva.net](mailto:dennym@kiva.net)  
812-37-2302

# Center for Behavioral Health



# CBH

- In existence since 1969
- Private, Non-profit 501(c)3
- JCAHO Accredited
- CBH saw ~9000 clients in FYE06
- 280 employees
  - 200 clinicians
  - 5 MDs/5 APNs

# CBH

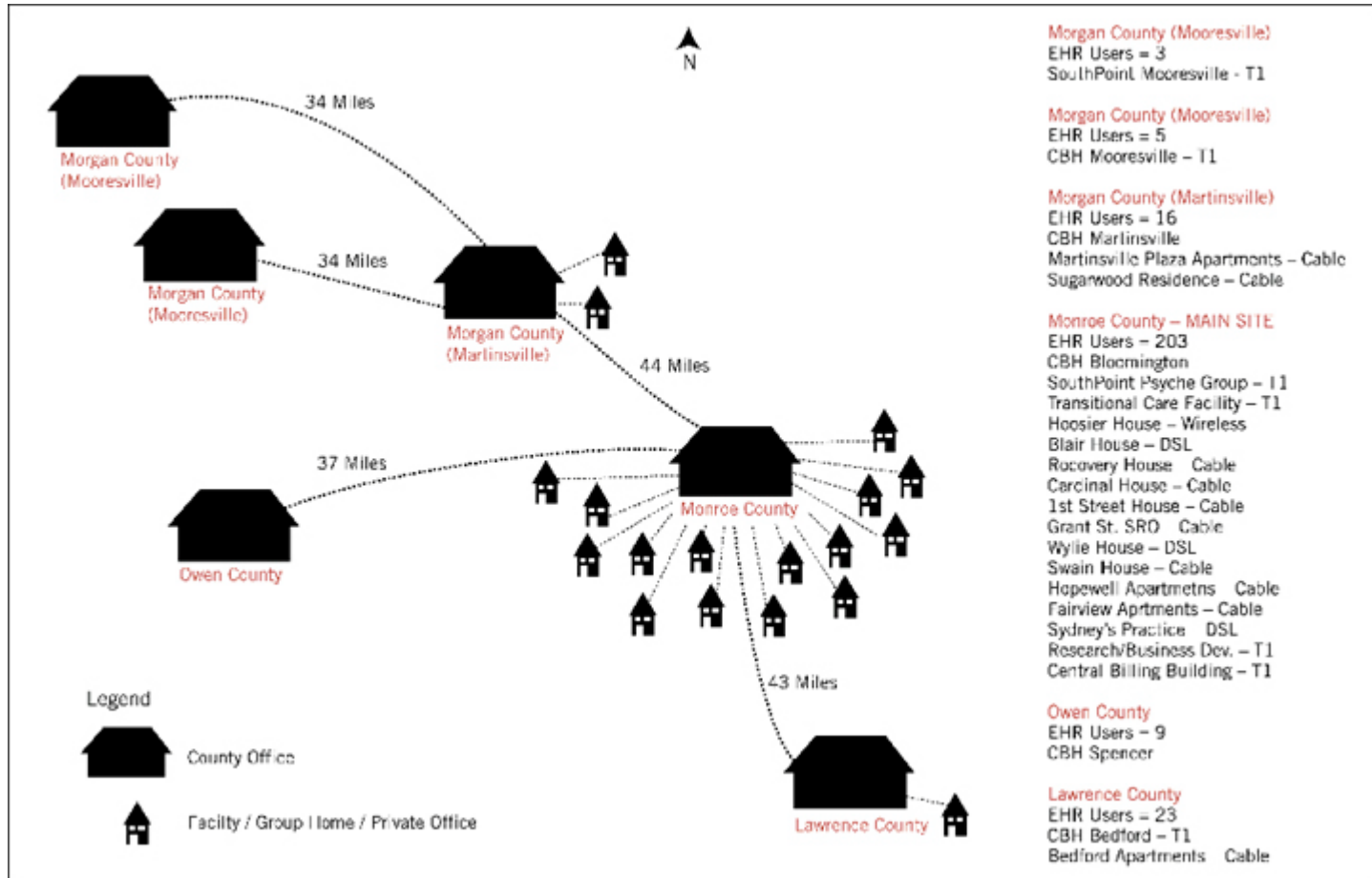
- Won JCAHO Codman Award – 1999
  - 100% of clients have outcomes measures
- Won HIMSS Davies Award – 2006
- Only health care institution of any kind to win both

# CBH Facilities

Note amount  
of housing  
and  
residential  
services

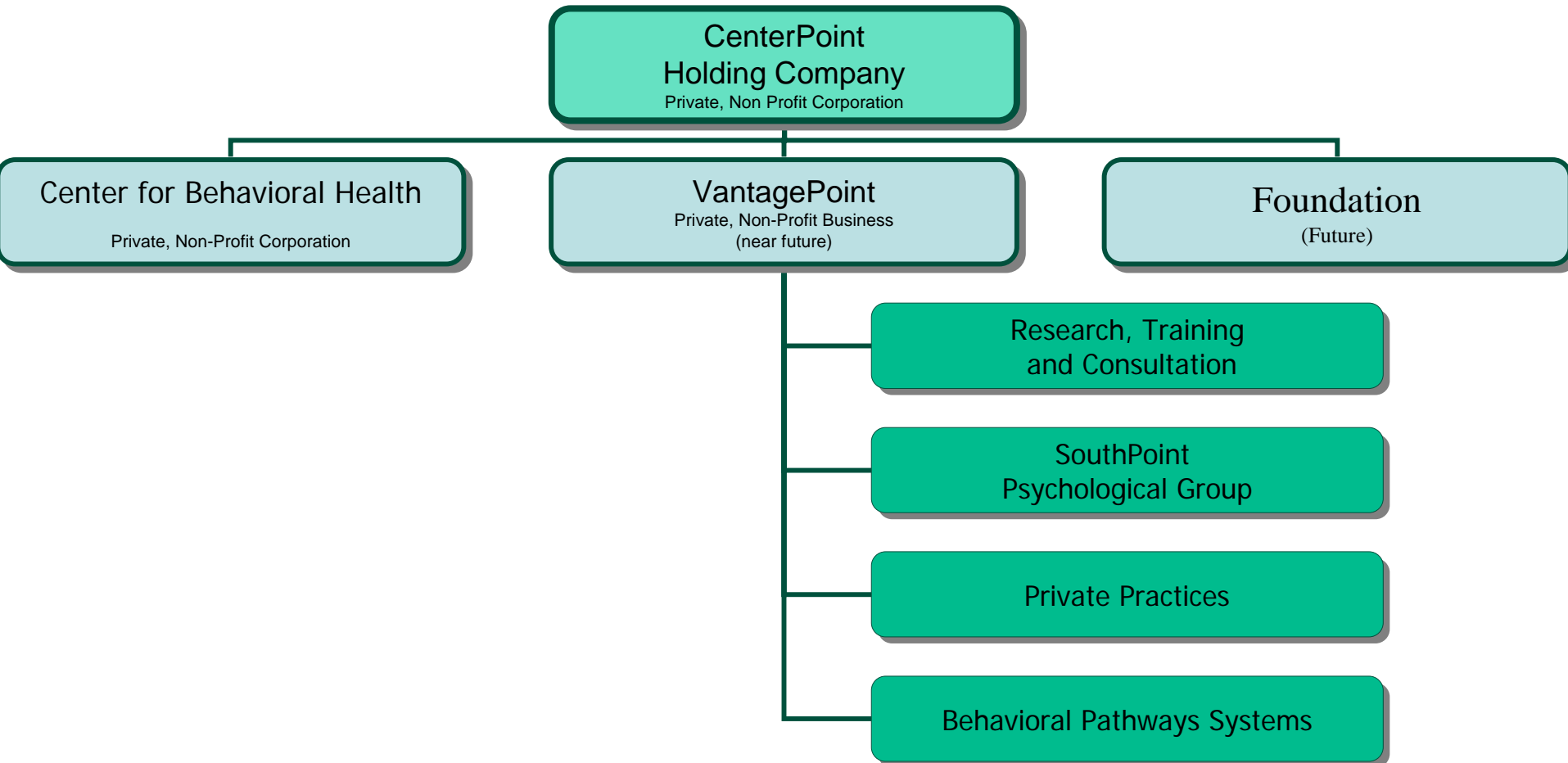
Facility	City	Purpose
R & D Annex	Bloomington	Administrative
TCF Annex	Bloomington	Administrative
Recovery House	Bloomington	Housing
Blair House	Bloomington	Housing
First Street House	Bloomington	Housing
Swain House	Bloomington	Housing
Hopewell Apartments	Bloomington	Housing
Cardinal House	Bloomington	Housing
Wylie House	Bloomington	Housing
Westplex Apartments	Bloomington	Housing
Bedford Apartments	Bedford	Housing
Mooresville Apartments	Mooresville	Housing
Martinsville Apartments	Martinsville	Housing
Fairview Apartments	Bloomington	Housing
Single Room Occupancy	Bloomington	Housing
CBH Bloomington	Bloomington	Outpatient Services
CBH Bedford	Bedford	Outpatient Services
CBH Mooresville	Mooresville	Outpatient Services
CBH Martinsville	Martinsville	Outpatient Services
CBH Spencer	Spencer	Outpatient Services
SouthPoint Psychological Services	Mooresville	Outpatient Services
Sydney Anderson, PhD	Bloomington	Outpatient Services
Clarizz (So Ind Peds)	Bloomington	Outpatient Services
Open Lot	Bloomington	Parking
Hosier House	Bloomington	Residential Treatment
Transitional Care Facility (TCF)	Bloomington	Residential Treatment

# Paperless



# Corporate Structure

## Current Structure



# Care Delivery Model

Burger King – “Have it your way”

How do people want to access their  
behavioral health care?

CMHC

Private Clinic

Individual Practitioner

Primary Care Practice

# Four Primary Care Practices

- Internal Medicine Associates (IMA)
  - 200+ Internal Medicine Practice
- Southern Indiana Pediatrics (SIP)
- Aegis Women's Health (OB-GYN)
- Outpatient Surgery Office

# SouthPoint Psychological Group

- Private practice group
- Sister corporation to Center for Behavioral Health

# IMA

- 1 Master's level clinician working there one day a week.
- Space = \$100 per week for exam room, scheduling services
  - We provide EAP services to offset the cost of the space.
- Scheduling
  - 8 patients a day
  - Unscheduled patients for consultation as requested
  - Medication recommendations.
  - Half-hour appointments
- Billing
  - We do our own billing
  - Direct payments from the patients

# SIP

- 1 Master's level clinician one and half days per week
  - Includes an ADHD clinic with nurse practitioners
  - Half-hour slots
  - Takes her own payments.
  - We do our own billing.
- Medication recommendations
- \$100 per month
- Feedback about the clinician has been extremely positive.
- They want a clinician to provide therapy, not a psychiatrist to provide medication.
- Were not getting referrals from them until we started this arrangement.

# Aegis

- Psychologist spending one day a week at that office.
  - We expect more clinical time in the near future.
- Paying \$115 per month
- Billing
  - Do our own billing
  - Clinician collects payments from the patients.
- Medical practitioners want a clinician to provide therapy, not a psychiatrist,
- They handle prescriptions

# Outpatient Surgery Office

- Pre-bariatric surgery psychological evaluations.
  - Psychologist in office 1 day per week
  - Bariatric surgery (lap band surgery)
  - Evaluation is required by insurance.
- 4-6 evaluations are scheduled per day.
  - Checklist streamlines paperwork for the clinician.
  - Completed form goes to the surgeon and is scanned in to our medical record.
- No charge for space
  - Goal: a one-stop shopping model.
  - Plans to build his own surgery suite, which will include an office for us.

# Electronic Health Record (EHR)

- EHR makes primary care integration easier
  - Can access our network and records from these remote sites
  - Don't have to carry paper records
- In CBH (not SouthPoint) EHR includes Clinical Decision Support Systems (CDSS)
  - Assists clinical decision making

# Evidence Based Treatments (EBT)

- Organization has a long history of EBT implementation
  - 1<sup>st</sup> Behavioral Health JCAHO Codman Winner
- EBTs in primary care are difficult to implement with high fidelity
  - Example: Barlow's protocol for Panic Disorder is 14 sessions
- Solution: Our clinicians tailor EBT components on case by case basis

# General Impressions

- Medical providers are pleased with these arrangements.
  - Regularly consult with BHC providers
  - We can consult with our medical director about medication questions
  - Relay this information to the primary care provider.
- Majority of the patients have payer sources

# Clinician Issues

- Key Success Factor: Special type of clinician to do this work
  - Flexible
  - Willing to work quickly (evaluations and recommendations)
  - Follow up with the referring provider
    - Initially and ongoing
    - Regarding involvement or lack thereof

# Public Sector Initiatives

- Considering acquisition of a Community Health Center
- Partnering in development of local Volunteer in Medicine Clinic
- Exploring hiring primary care provider (MD or NP) at CMHC